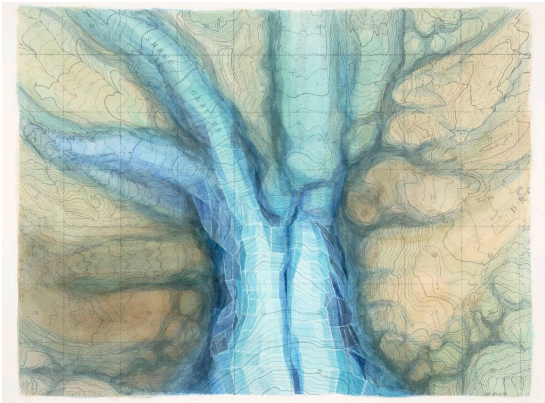


**June 9, 2010**  
**FOR IMMEDIATE RELEASE**

**CONTACT:** Tatjana Beylotte, Executive Director  
804.643.1708 or [tbeylotte@1708gallery.org](mailto:tbeylotte@1708gallery.org)

**GLACIAL SPEED**  
**Cynthia Camlin**  
JULY 9 - AUGUST 14, 2010



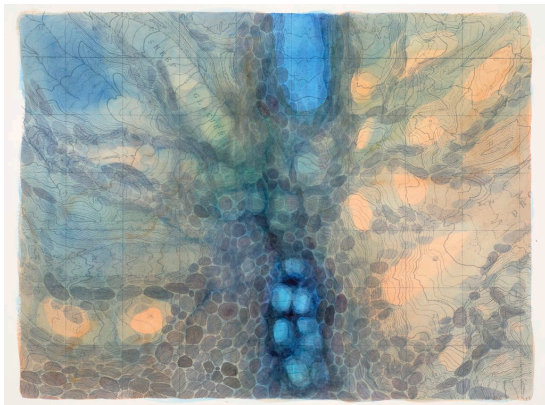
Cynthia Camlin's upcoming exhibit, *Glacial Speed*, will be shown for the first time at 1708 Gallery on Friday, July 9 and will be on view through Saturday, August 14. Join us for the opening reception on Friday, July 9 from 5:30 p.m. to 7:30 p.m. The reception will feature a talk by the artist at 6:00 p.m.

Through watercolor washed screen prints and video, *Glacial Speed* portrays the phases of a melting glacier. The 80 screen prints shown are depictions of a USGS map featuring glaciers at Mt. Sanford in Alaska. Over the course of two years, Camlin painted each print individually using washes and crystal-like abstract forms to represent the passing of time and how it affects the topography of the glaciers.



With her work, Camlin explores "how it would look for a glacier to melt, if you could watch the changes year to year, decade to decade from above." To enforce the feeling of change, and bring a stronger sense of connection to the paintings, the exhibition also features a video slideshow. The video, complete with sound connects, simultaneously constructs and collapses time over the course of a 4 minute loop.

Since 2004, Camlin has been exploring in abstract and representational ways, ideas of the natural and the sublime. In her more current work, she has been "reinsert[ing] the formal process of abstract, crystallized forms into the space of icy landscapes, attempting to bring disparate graphic languages into unsteady equilibriums."



Cynthia Camlin has exhibited across the U.S. and was just awarded a Summer Faculty Research Grant from Western Washington University in Bellingham, WA, where she is currently the Assistant Professor of Painting. She received her BA from Duke University and an MA from the University of Virginia before going on to study painting at Yale University, then later receive her MFA in Painting and Drawing from the University of Texas at Austin in 2000. To learn more about Cynthia Camlin, please visit her website: [www.cynthiacamlin.com](http://www.cynthiacamlin.com)

IMAGE CREDITS: from top to bottom: *Glacial Speed, Frame 29*; *Glacial Speed, Frame 42*; *Glacial Speed, Frame 45*; all pieces: 22" x 30", watercolor and screen print on Arches cold press watercolor paper, 2007-09

**1708 Gallery** is a non-profit arts organization committed to presenting exceptional new art. 1708 Gallery is committed to providing opportunities for artistic innovation for emerging and established artists and to expanding the understanding and appreciation of new art for the public.

###